

GENERAL NOTES

1. Do not scale from this drawing, if in doubt ask.
2. All dimensions are in millimetres unless noted otherwise.
3. This drawing is to be read in conjunction with all relevant Architects, Services and Engineers drawings and specifications.
4. Any discrepancies are to be reported immediately in writing to the Architect and Engineer for verification.
5. Refer to architects drawing for setting out dimensions.
6. The contractor is responsible for the stability of the new and existing building whilst the works are in progress.
7. All temporary works are to be the responsibility of the contractor. The contractor shall establish and maintain safe working practices and shall fully discharge their obligations under health and safety regulations.
8. All works shall comply with all relevant statutory requirements, British Standards, Eurocodes, codes of practice, Building regulations and recognised good practice.
9. All proprietary materials to be used in strict accordance with manufacturer's instructions.

STEELWORK NOTES

1. The structural steelwork is to comply with the relevant clauses of BS 5950-1 & 2 (&/OR) BS EN 1993-1, and the current edition of the National Structural Steelwork Specification and will be suitably protected for the expected exposure conditions (including during the construction period).
2. Internal structural steelwork corrosion protection. Surface preparation (BS 7079: Part A1) Blast clean to Sa 2 1/2. Zinc phosphate epoxy primer 80µm
3. Fire protection of structural steelwork to architect's specification
4. All double beams to be bolted together with M16 (GR 8.8) bolts in 42.4Ø x 4.0 CHS tubes at 900 c/c. Centred to web.
5. Minimum bearing onto masonry or padstone to be 150mm
6. Hole sizes and spacing are to be in accordance with BS5950 &/or BS 1993-1-8 & N.A. to BS EN 1993-1-8.

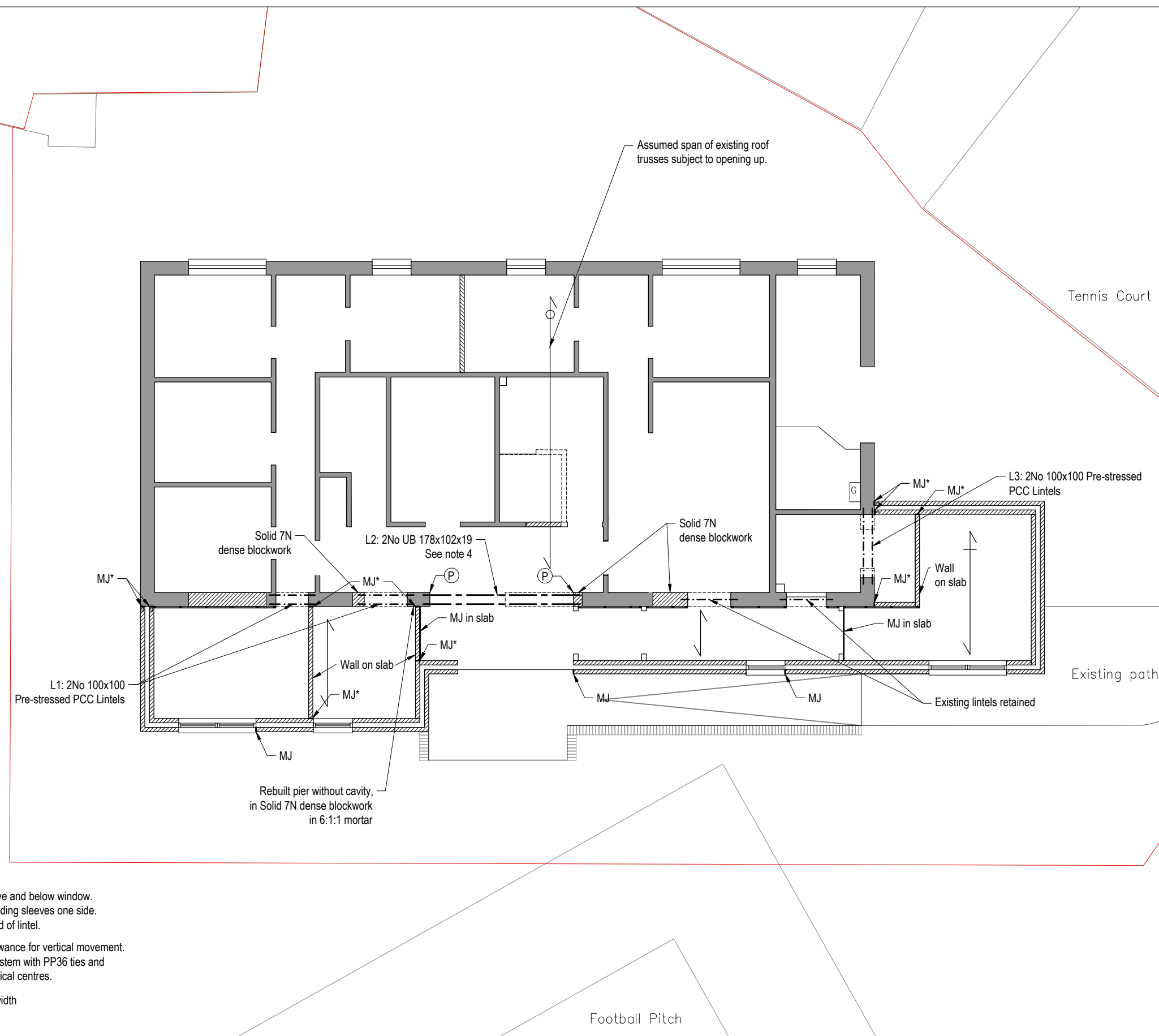
All new external wall lintels to be Catnic CG standard duty lintels (or similar approved) minimum 150mm bearing

↔ Roof Joist 47x147 C16 @ 600c/c
 ↔ Roof Joist 47x147 C16 @ 400c/c

----- Existing Wall Removed

▨ New Blockwork

MJ Movement joint outer leaf above and below window. With ties @225 c/c with debonding sleeves one side. Above window start joint at end of lintel.
 MJ* Form expansion joint with allowance for vertical movement. Use Ancon 36/8 wall starter system with PP36 ties and debonding sleeves, @450 vertical centres.
 (P) Padstone min 150x150x wall width



MASONRY NOTES

1. All masonry is to comply with the recommendations of BS 5628 and BS EN 1996-1-1 and N.A. BS EN 1996-1-1.
2. Blockwork shall be in accordance with BS EN 771-3 with mean compressive strength of 7 N/mm² unless noted otherwise.
3. Mortar below DPC shall be designation (ii), compressive strength class M6, in accordance with BS EN 998-2.
4. Mortar above DPC shall be designation (iii), compressive strength class M4, in accordance with BS EN 998-2.
5. Minimum bearing of proprietary lintels to be in accordance with manufacturers details.
6. Cavity wall ties to Architect's specification.

Project		Extension to Sunnyside changing Rooms, Yate, BS37 4PP	
Title		Ground Floor Plan Showing Structure Above	
P1	03/05/18	First issue	ER PB
Rev	Date	Amendment	ER ✓ PB
Drawing Status		PRELIMINARY	
Scale		1:100	Date 03/05/18
Project No.		7940SSP	Drawing No. 101
Sheet Size		A3	
Rev.		P1	

STRUCTURAL SOLUTIONS

Dairy Studios | 102 Lincoln Street | Bristol | BS5 0BJ
 0117 924 5014